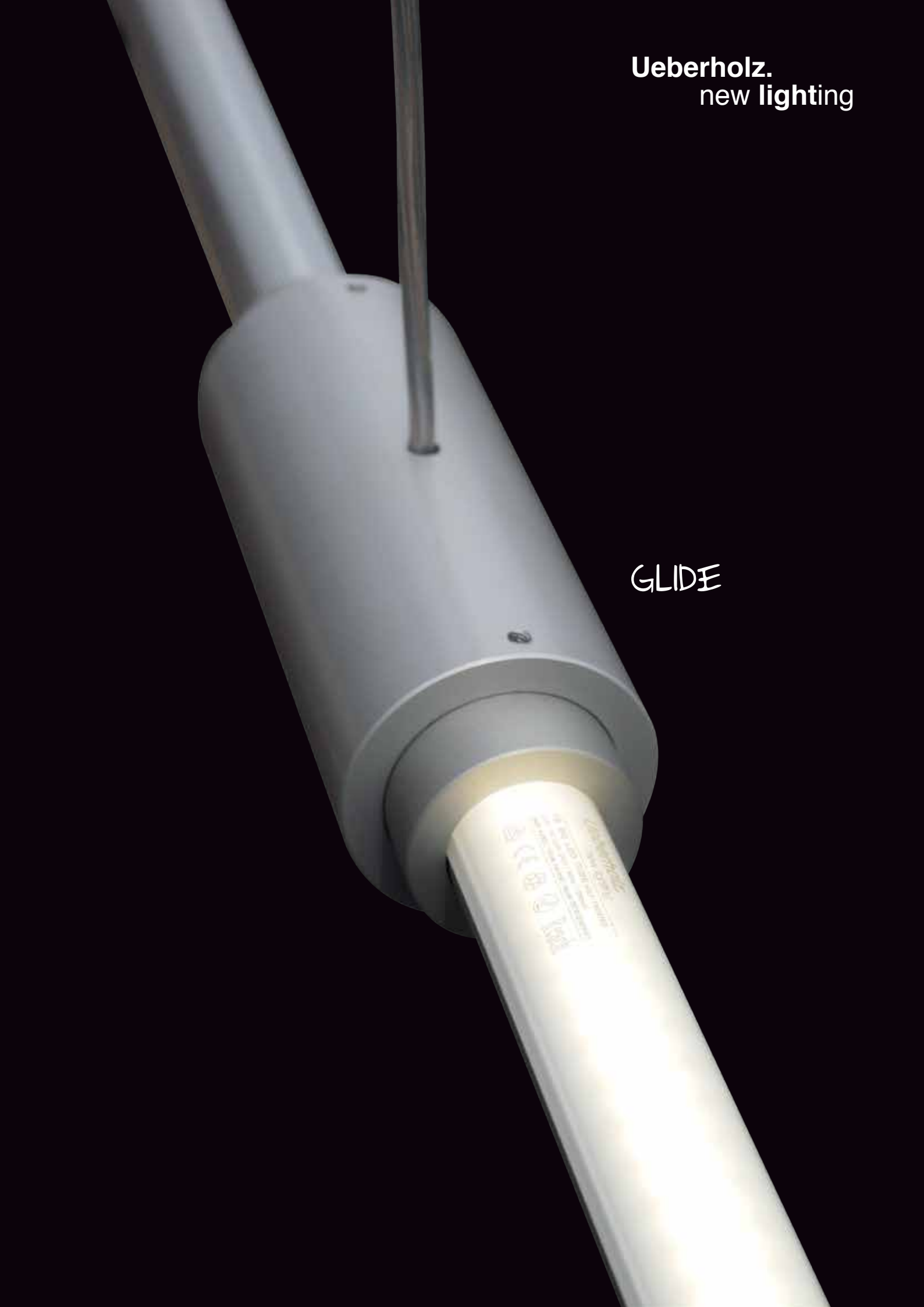
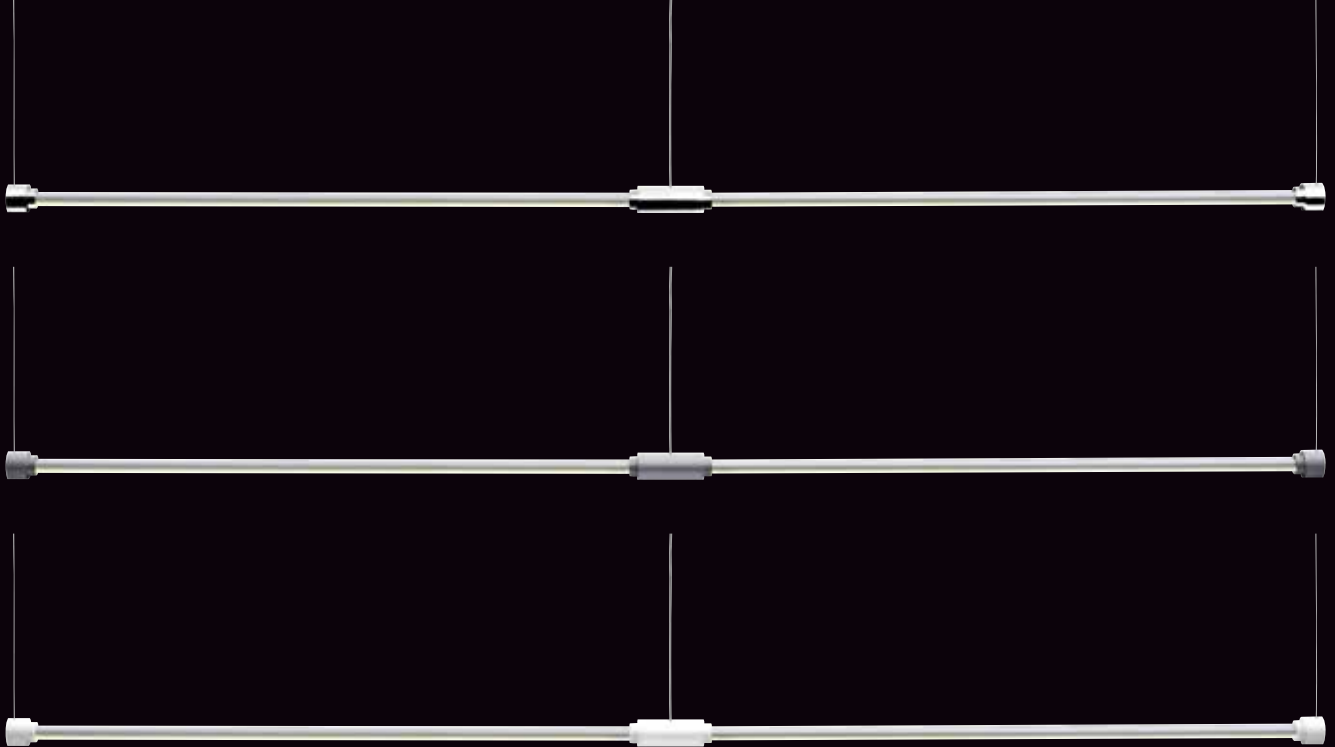


Ueberholz.
new lighting

GLIDE

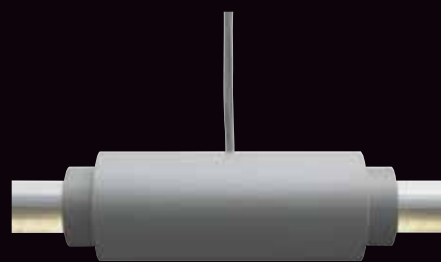




The three available surface of the pendant luminaire GLIDE: polished aluminium, silver and white

The LED pendant luminaire GLIDE enhances the product portfolio of the PIPE range of lights by Ueberholz new lighting. The distinct shape was designed with the function of the luminaire in mind and is accentuated by the T8 EQ LED lamp, which is also manufactured in-house.

As its name suggests, the lamp is based on the traditional shape of a T8 tube, with which it is 100% compatible. The LED tube is available in different lighting colours, power stages and lengths (2900 - 6500K, max. 26W, max. 1500mm) and also boasts an impressive maximum light output of 2750lm per luminaire head.



In addition to its exceptional energy efficiency, the GLIDE LED pendant luminaire has a modular design, ensuring its suitability for a wide range of applications. The width of the pendant luminaire can be defined at will, for instance, by installing the appropriate LED tubes with lengths between 1200mm and 3000mm at fixed distances. Due to the functional rotation in the connecting piece, each tube can be independently rotated by 360°,

enabling direct or indirect lighting with either the entire luminaire or just one part of it. This means that GLIDE is not only suitable for the lighting of an individual workplace it is also superb for the large-scale lighting of offices or objects.

The three available surface finishes of polished aluminium, silver and white round off the GLIDE pendant luminaire offer.





Ueberholz.
new lighting



Ueberholz new lighting is
a division of Ueberholz GmbH.

Vorn Eichholz 2e
42119 Wuppertal, Germany

Telephone: +49 (0) 202 - 280 96 - 88
Fax: +49 (0) 202 - 280 96 - 66

info@ueberholz-newlighting.de
www.ueberholz-newlighting.de



The certificates only apply to the illuminant.